

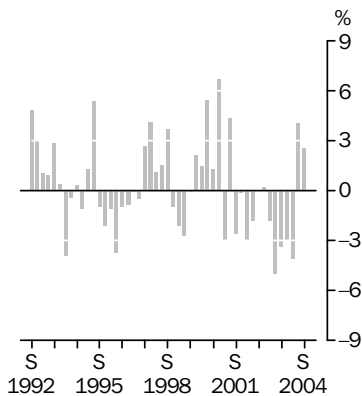
INTERNATIONAL TRADE PRICE INDEXES

AUSTRALIA

EMBARGO: 11.30AM (CANBERRA TIME) FRI 22 OCT 2004

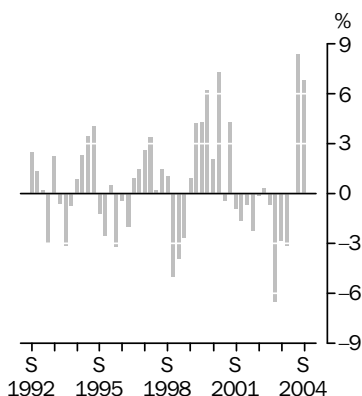
IMPORT PRICE INDEX: all groups

Quarterly % change



EXPORT PRICE INDEX: all groups

Quarterly % change



KEY FIGURES

	<i>Jun Qtr 04 to Sep Qtr 04</i>	<i>Sep Qtr 03 to Sep Qtr 04</i>
	<i>% change</i>	<i>% change</i>
Import Price Index all groups	2.6	-0.6
Food and live animals	2.3	0.3
Beverages and tobacco	-1.3	-2.8
Crude materials	5.0	-0.7
Mineral fuels, etc.	12.4	23.0
Animal and vegetable oils, etc.	10.6	10.3
Chemicals and related products	2.0	2.4
Manufactured goods by material	3.8	2.4
Machinery and transport equipment	1.0	-4.9
Miscellaneous manufactured articles	1.9	-4.3
Commodities and transactions n.e.s.	2.8	2.7
Export Price Index all groups	6.9	12.3
Food and live animals	5.4	8.1
Beverages and tobacco	2.1	2.3
Crude materials	5.5	10.8
Mineral fuels, etc.	15.5	24.4
Chemicals and related products	2.0	15.2
Manufactured goods by material	9.3	26.6
Machinery and transport equipment	0.7	-4.9
Miscellaneous manufactured articles	0.9	-5.1

KEY POINTS

IMPORT PRICE INDEX

- The Import Price Index increased by 2.6 % in the September quarter 2004, following a 4.1% increase in the June quarter 2004. Contributing most to the increase were crude petroleum oils and other fuel oils and related products, due to world prices, and aircraft and motor vehicle parts. The increases were partially driven by the depreciation of the Australian dollar against all major currencies. The most significant offsetting price decreases were observed for colour televisions and monitors, and communication transmission apparatus.

EXPORT PRICE INDEX

- The Export Price Index increased by 6.9% in the September quarter 2004, following an 8.4% increase in the June quarter 2004. Increases were registered this quarter for the majority of commodities, with the most significant contributors being coal and semi-coke, crude petroleum oils, frozen beef and manganese ores and concentrates.

INQUIRIES

- For further information about these and related statistics, contact the National Information and Referral Service on 1300 135 070 or Steve Whennan on Canberra (02) 6252 6251.

NOTES

FORTHCOMING ISSUES

<i>ISSUE (Quarter)</i>	<i>RELEASE DATE</i>
December 2004	21 January 2005
March 2005	22 April 2005

.....

CHANGES IN THIS ISSUE

Both the Import Price Index and the Export Price Index have been reweighted in the September quarter 2004. This is in line with the ABS' policy of reweighting these indexes annually in the September quarter, as explained in paragraphs 8–10 of the Explanatory Notes. The new weighting patterns are provided in an Appendix to this issue.

As a consequence of this annual reweighting, points contribution data for June quarter 2004 shown in Tables 2, 8 and 17 differ from those published in the previous issue of this publication.

ROUNDING

Any discrepancies between totals and sums of components in this publication are due to rounding.

RELATED STATISTICS

For more information about statistics in this publication and about other 'ABS data available on request', contact Steve Whennan on (02) 6252 6251, or email <steve.whennan@abs.gov.au>.

.....

ABBREVIATIONS

ABS	Australian Bureau of Statistics
ADP	automatic data processing
AHECC	Australian Harmonised Export Commodity Classification
ANZSIC	Australian and New Zealand Standard Industrial Classification
BEC	Classification by Broad Economic Categories
f.o.b.	free on board
HTISC	Harmonized Tariff Item Statistical Classification
n.e.s.	not elsewhere specified
SITC	Standard International Trade Classification

Peter Harper
Acting Australian Statistician

LIST OF TABLES

page

INTERNATIONAL TRADE PRICE INDEXES

1	Import price index, all groups, index numbers and percentage changes	4
2	Import price index, SITC contribution to all groups index	5
3	Import price index, SITC section	6
4	Import price index, BEC end use class, broad balance of payments categories, consumption goods	7
5	Import price index, BEC end use class, broad balance of payments categories, capital goods	8
6	Import price index, BEC end use class, broad balance of payments categories, intermediate and other merchandise goods	9
7	Export price index, all groups, index numbers and percentage changes	11
8	Export price index, SITC contribution to all groups index	12
9	Export price index, selected SITC section	13
10	Export price index, balance of payments groups, rural goods	14
11	Export price index, balance of payments groups, non-rural goods	15

ADDITIONAL TABLES AVAILABLE ON ABS WEB SITE

12	Import price index, by selected SITC division	
13	Import price index, by selected HTISC section	
14	Import price index, by selected ANZSIC industry of origin division	
15	Import price index, by selected ANZSIC industry of origin subdivision	
16	Import price index, by BEC category	
17	Export price index, AHECC and ANZSIC contribution to all groups index	
18	Export price index, by selected AHECC section	
19	Export price index, by selected ANZSIC industry of origin division and subdivision	

IMPORT PRICE INDEX(a): All groups index numbers and percentage changes

<i>Period</i>	<i>Index numbers</i>	<i>% change from previous period</i>	<i>% change from corresponding quarter of previous year</i>
2000-01	134.3	11.7	..
2001-02	132.3	-1.5	..
2002-03	126.0	-4.8	..
2003-04	112.3	-10.9	..
1999			
December	118.3	2.2	-2.8
2000			
March	120.1	1.5	0.8
June	126.7	5.5	9.3
September	128.4	1.3	10.9
December	137.0	6.7	15.8
2001			
March	132.9	-3.0	10.7
June	138.7	4.4	9.5
September	135.1	-2.6	5.2
December	134.9	-0.1	-1.5
2002			
March	130.8	-3.0	-1.6
June	128.4	-1.8	-7.4
September	128.5	0.1	-4.9
December	128.8	0.2	-4.5
2003			
March	126.4	-1.9	-3.4
June	120.1	-5.0	-6.5
September	116.0	-3.4	-9.7
December	112.6	-2.9	-12.6
2004			
March	108.0	-4.1	-14.6
June	112.4	4.1	-6.4
September	115.3	2.6	-0.6

.. not applicable

(a) Reference base of each index: 1989-90 = 100.0.

IMPORT PRICE INDEX(a): SITC contribution to all groups index

Category	Jun Qtr 2004(b)	Sep Qtr 2004	Jun Qtr 2004 to Sep Qtr 2004
ALL GROUPS			
All groups	112.4	115.3	2.9
SITC SECTIONS—CONTRIBUTION TO ALL GROUPS (INDEX POINTS)			
0 Food and live animals chiefly for food	4.41	4.52	0.11
1 Beverages and tobacco	0.84	0.83	-0.01
2 Crude materials, inedible, except fuels	1.73	1.81	0.08
3 Mineral fuels, lubricants and other related materials	8.18	9.19	1.01
4 Animal and vegetable oils, etc.	0.33	0.36	0.03
5 Chemicals and related products n.e.s.	13.25	13.52	0.27
6 Manufactured goods classified chiefly by material	13.67	14.19	0.52
7 Machinery and transport equipment	53.80	54.35	0.55
8 Miscellaneous manufactured articles	15.64	15.95	0.31
9 Commodities and transactions n.e.s.	0.59	0.61	0.02
SELECTED SITC DIVISIONS—CONTRIBUTION TO ALL GROUPS (INDEX POINTS)			
03 Fish, crustaceans and molluscs and preparations thereof	0.83	0.88	0.05
24 Cork and wood	0.65	0.66	0.01
33 Petroleum, petroleum products and related materials	8.04	9.04	1.00
51 Organic chemicals	2.03	2.07	0.04
52 Inorganic chemicals	0.66	0.68	0.02
59 Chemical materials and products n.e.s.	1.25	1.30	0.05
64 Paper, paperboard and articles made of paper	2.25	2.22	-0.03
65 Textile yarn, fabrics and related products	2.05	2.10	0.05
69 Manufactures of metals n.e.s.	2.83	2.90	0.07
71 Power generating machinery and equipment	2.47	2.56	0.09
72 Machinery specialised for particular industries	4.43	4.50	0.07
74 General industrial machinery, equipment and parts	6.18	6.32	0.14
75 Office machines and ADP machines	7.27	7.35	0.08
76 Telecommunications and sound recording equipment	6.94	6.79	-0.15
77 Electrical machinery, etc. and parts thereof	6.37	6.48	0.11
78 Road vehicles	15.87	15.97	0.10
79 Other transport equipment	3.71	3.82	0.11
87 Professional, scientific and controlling instruments and apparatus n.e.s.	2.91	2.94	0.03
89 Miscellaneous manufactured articles n.e.s.	5.47	5.55	0.08

(a) Reference base of each index 1989-90 = 100.0.

(b) Differs from previously published June quarter 2004 due to annual reweighting.

IMPORT PRICE INDEX(a): Selected SITC section

<i>Period</i>	<i>Food and live animals chiefly for food (0)</i>	<i>Beverages and tobacco (1)</i>	<i>Crude materials, inedible, except fuels (2)</i>	<i>Mineral fuels, lubricants and other related materials (3)</i>	<i>Animal and vegetable oils, fats and waxes (4)</i>	<i>Chemicals and related products n.e.s. (5)</i>	<i>Manufactured goods classified chiefly by material (6)</i>	<i>Machinery and transport equipment (7)</i>	<i>Miscellaneous manufactured articles (8)</i>	<i>Commodities and transactions n.e.s. (9)</i>
2000-01	121.4	128.5	139.9	188.0	122.6	128.1	131.3	129.7	140.0	99.6
2001-02	122.5	132.9	124.9	158.4	122.1	128.5	133.9	128.2	143.0	110.8
2002-03	125.1	139.9	123.1	174.9	141.0	120.2	129.2	118.7	132.1	115.4
2003-04	116.9	134.1	112.2	156.2	134.9	113.2	118.9	103.3	114.4	110.2
1999										
December	116.0	126.6	120.2	128.4	147.9	106.6	118.4	118.6	123.9	92.1
2000										
March	116.3	127.7	127.0	143.7	126.8	111.4	119.7	118.4	125.5	92.2
June	118.7	127.5	136.6	158.3	130.3	120.3	125.4	124.2	132.0	95.0
September	117.8	125.1	140.5	184.2	126.6	120.5	125.1	123.8	133.5	96.5
December	121.9	129.2	147.8	216.5	126.1	125.9	132.8	131.3	140.6	101.5
2001										
March	121.4	128.7	137.8	167.5	117.5	128.7	131.3	129.6	139.8	99.4
June	124.3	131.0	133.3	183.9	120.1	137.1	136.1	134.0	146.2	101.1
September	121.3	132.1	127.6	180.4	121.2	131.1	133.8	130.1	144.1	107.1
December	122.9	133.1	124.7	156.5	123.9	132.8	135.8	131.3	146.4	109.0
2002										
March	123.8	133.7	125.1	136.0	122.7	127.8	134.4	127.9	143.0	112.8
June	121.9	132.6	122.3	160.5	120.5	122.1	131.6	123.4	138.3	114.2
September	124.1	139.9	124.3	165.1	137.9	122.0	131.0	123.3	136.6	115.1
December	126.3	139.2	123.7	179.3	143.6	122.3	131.4	121.9	135.6	115.6
2003										
March	126.0	140.9	122.5	191.5	143.2	119.6	129.1	117.4	131.4	120.0
June	123.8	139.4	121.7	163.6	139.2	117.0	125.2	112.1	124.9	110.9
September	119.2	134.9	118.0	156.3	134.5	114.6	121.6	107.9	120.3	111.2
December	117.0	134.7	112.4	152.4	135.7	112.4	118.8	104.4	115.2	110.5
2004										
March	114.5	134.0	106.6	145.2	135.3	110.6	115.2	99.3	109.1	107.8
June	116.8	132.8	111.6	171.0	134.1	115.1	120.0	101.6	112.9	111.1
September	119.5	131.1	117.2	192.2	148.3	117.4	124.5	102.6	115.1	114.2

(a) Reference base of each index: 1989-90 = 100.0.

IMPORT PRICE INDEX(a): Consumption goods

Period	BEC END USE	BROAD BALANCE OF PAYMENTS CATEGORIES					
	Consumption goods total	Food and beverages, mainly for consumption	Household electrical items	Non- industrial transport equipment	Textiles, clothing and footwear	Toys, books and leisure goods	Consumption goods n.e.s.
2000-01	137.3	128.0	119.3	162.3	133.1	142.9	132.1
2001-02	139.4	129.9	118.6	169.8	137.8	145.4	132.7
2002-03	133.5	132.8	107.9	164.7	127.7	138.0	126.4
2003-04	121.8	125.9	93.2	156.3	107.9	121.2	116.6
1999							
December	125.9	121.5	108.8	153.2	116.2	137.2	118.1
2000							
March	126.2	121.0	109.1	153.6	114.4	135.9	119.6
June	131.1	124.6	114.0	155.2	124.0	139.9	125.7
September	132.0	123.7	115.0	156.3	124.9	138.6	127.5
December	137.7	127.8	121.0	160.7	133.7	144.4	132.5
2001							
March	137.1	128.9	119.7	162.0	132.9	143.1	131.4
June	142.4	131.4	121.5	170.3	140.8	145.5	137.1
September	139.8	128.8	119.6	170.6	137.8	144.1	133.8
December	141.7	130.7	120.1	172.7	140.1	147.8	135.4
2002							
March	139.7	131.4	119.0	169.6	138.7	147.2	132.1
June	136.4	128.8	115.8	166.1	134.7	142.3	129.3
September	136.0	132.2	113.8	165.9	132.7	140.7	128.6
December	135.7	133.7	109.0	166.1	132.1	140.5	128.6
2003							
March	133.4	133.4	107.0	164.7	126.7	138.1	126.3
June	129.0	131.9	101.8	162.0	119.4	132.8	121.9
September	125.5	127.7	97.5	158.9	114.7	128.3	119.3
December	122.3	126.0	94.4	156.8	109.9	122.3	116.5
2004							
March	118.3	123.9	89.9	154.6	101.9	115.2	113.7
June	120.9	125.9	90.9	154.9	105.2	118.8	116.8
September	122.2	128.2	89.7	154.0	108.4	121.4	118.2

(a) Reference base of each index: 1989-90 = 100.0.

IMPORT PRICE INDEX(a): Capital goods

Period	BEC END USE	BROAD BALANCE OF PAYMENTS CATEGORIES					
	Capital goods total	Machinery and industrial equipment	ADP equipment	Telecommunications equipment	Civil aircraft	Industrial transport equipment n.e.s.	Capital goods n.e.s.
2000-01	126.9	152.8	51.7	68.1	161.8	173.6	151.9
2001-02	125.7	155.2	43.6	67.3	173.8	178.2	155.3
2002-03	116.7	145.1	35.5	62.9	158.8	175.4	143.9
2003-04	101.9	130.6	25.9	52.0	136.7	165.5	129.0
1999							
December	115.8	136.5	50.3	65.2	128.8	165.4	133.7
2000							
March	115.7	137.1	48.5	64.9	130.4	163.3	137.0
June	122.0	145.8	50.9	67.8	142.3	167.8	144.3
September	121.3	145.0	49.9	67.0	145.8	167.4	143.8
December	128.4	154.5	53.2	68.6	162.8	174.9	152.9
2001							
March	126.8	152.8	51.7	67.9	162.7	172.6	151.7
June	131.2	158.7	52.1	68.9	175.7	179.4	159.0
September	127.4	156.2	46.2	67.6	174.7	179.3	155.3
December	129.0	160.9	45.7	68.0	178.0	181.6	158.0
2002							
March	125.3	155.2	42.8	67.1	176.1	177.4	156.3
June	121.1	148.6	39.6	66.5	166.5	174.4	151.5
September	121.4	149.1	38.9	66.5	164.6	178.9	147.8
December	119.9	147.5	37.5	66.7	164.9	176.6	147.1
2003							
March	115.4	144.5	34.4	61.7	157.5	174.4	143.2
June	110.1	139.2	31.2	56.7	148.2	171.7	137.6
September	106.3	134.8	28.8	54.6	144.1	169.0	133.9
December	102.6	130.0	26.5	53.0	138.5	166.5	129.0
2004							
March	98.3	125.9	23.7	50.9	128.3	162.2	126.0
June	100.5	131.5	24.4	49.6	135.9	164.3	127.2
September	101.4	133.7	24.7	48.4	140.0	167.6	128.4

(a) Reference base of each index: 1989-90 = 100.0.

IMPORT PRICE INDEX(a): Intermediate & other merchandise goods

Period	BROAD BALANCE OF PAYMENTS CATEGORIES								
	Intermediate and other merchandise goods total	Intermediate and other merchandise goods total excluding non-monetary gold	Food and beverages, mainly for industry	Primary industrial supplies n.e.s.	Fuels and lubricants	Parts for transport equipment	Parts for ADP equipment	Other parts for capital goods	Organic and inorganic chemicals
2000-01	130.8	131.2	105.5	127.8	219.2	149.1	43.0	127.4	124.6
2001-02	126.0	126.2	103.1	125.2	183.3	153.7	35.7	122.9	124.2
2002-03	121.7	121.7	125.7	126.9	204.0	146.0	28.5	111.9	110.0
2003-04	108.2	108.4	115.8	115.2	182.8	130.4	20.6	94.0	103.7
1999									
December	110.7	111.0	122.7	110.5	148.1	134.7	41.9	114.2	102.5
2000									
March	114.0	114.4	123.3	111.0	166.3	135.5	39.5	115.0	108.2
June	121.2	121.6	117.3	119.7	184.7	141.2	42.3	121.6	116.9
September	124.9	125.3	112.2	120.5	214.9	141.2	41.5	120.8	116.8
December	135.6	136.1	113.4	128.2	253.4	151.3	44.2	129.2	121.9
2001									
March	128.1	128.4	95.6	128.6	194.6	148.8	43.0	127.6	124.6
June	134.7	135.1	100.6	133.7	213.7	154.9	43.4	132.0	135.2
September	130.9	131.2	102.4	130.2	209.9	154.6	38.0	125.0	128.6
December	128.3	128.5	100.0	122.2	181.0	155.3	37.5	126.0	130.4
2002									
March	122.7	122.8	101.4	125.2	156.2	154.9	35.0	123.0	123.6
June	122.2	122.3	108.7	123.3	186.2	149.9	32.2	117.7	114.1
September	122.6	122.7	119.1	124.8	192.0	148.9	31.4	116.7	113.2
December	124.6	124.7	127.3	128.1	209.2	149.4	30.2	115.7	112.9
2003									
March	123.5	123.6	131.8	128.4	223.8	144.9	27.6	110.4	108.9
June	115.9	115.9	124.6	126.2	190.8	140.6	24.9	104.8	104.8
September	111.3	111.4	117.2	122.3	182.6	134.4	22.9	100.1	104.1
December	108.1	108.2	115.8	115.9	177.9	134.1	21.2	95.2	102.7
2004									
March	103.1	103.2	115.6	109.9	169.9	125.0	18.9	88.9	101.1
June	110.3	110.6	114.4	112.6	200.6	128.2	19.5	91.9	106.8
September	115.7	116.0	120.4	118.5	225.8	133.1	19.7	93.3	109.1

(a) Reference base of each index: 1989-90 = 100.0.

BROAD BALANCE OF PAYMENTS CATEGORIES *continued*

<i>Period</i>	<i>Paper and paperboard</i>	<i>Textile yarn and fabrics</i>	<i>Iron and steel</i>	<i>Plastics</i>	<i>Processed industrial supplies n.e.s.</i>	<i>Non- monetary gold</i>
2000-01	121.4	125.5	116.0	136.6	136.7	99.8
2001-02	122.5	126.3	111.9	137.6	139.0	110.9
2002-03	113.6	117.8	114.4	128.9	134.2	115.5
2003-04	101.5	103.3	113.2	113.0	122.4	110.3
1999						
December	106.0	109.2	102.7	110.8	123.0	92.1
2000						
March	105.9	111.0	106.1	115.8	125.0	92.3
June	111.6	118.5	112.9	125.7	129.3	95.1
September	116.9	113.2	111.7	129.0	130.4	96.6
December	121.3	129.7	118.3	138.1	137.5	101.6
2001						
March	121.2	126.7	115.7	136.5	137.9	99.5
June	126.1	132.3	118.3	142.6	141.0	101.3
September	122.3	128.2	112.9	140.0	139.5	107.2
December	125.0	129.2	114.3	140.5	141.7	109.1
2002						
March	122.3	127.0	111.7	137.6	138.8	112.9
June	120.5	120.8	108.7	132.4	136.1	114.3
September	116.5	121.3	111.9	134.5	135.8	115.2
December	115.4	120.7	116.1	131.2	136.3	115.7
2003						
March	112.4	116.6	115.9	126.2	134.5	120.1
June	110.2	112.6	113.7	123.8	130.0	111.0
September	105.6	107.5	112.4	117.2	125.8	111.3
December	103.9	102.1	109.1	112.0	122.3	110.6
2004						
March	99.3	98.7	106.6	106.7	118.3	108.0
June	97.0	105.0	124.5	116.2	123.0	111.3
September	96.0	108.4	140.3	120.7	127.4	114.3

(a) Reference base of each index: 1989-90 = 100.0.

EXPORT PRICE INDEX (a): All groups, index numbers and percentage changes

<i>Period</i>	<i>Index numbers</i>	<i>% change from previous period</i>	<i>% change from corresponding quarter of previous year</i>
2000-01	114.8	17.1	..
2001-02	116.7	1.7	..
2002-03	111.7	-4.3	..
2003-04	102.5	-8.2	..
1999			
December	95.4	4.3	-1.5
2000			
March	99.5	4.3	6.9
June	105.7	6.2	16.7
September	107.9	2.1	17.9
December	115.8	7.3	21.4
2001			
March	115.3	-0.4	15.9
June	120.3	4.3	13.8
September	119.2	-0.9	10.5
December	117.2	-1.7	1.2
2002			
March	116.4	-0.7	1.0
June	113.8	-2.2	-5.4
September	113.6	-0.2	-4.7
December	114.0	0.4	-2.7
2003			
March	113.2	-0.7	-2.7
June	105.8	-6.5	-7.0
September	102.8	-2.8	-9.5
December	99.6	-3.1	-12.6
2004			
March	99.6	0.0	-12.0
June	108.0	8.4	2.1
September	115.4	6.9	12.3

.. not applicable

(a) Reference base of each index: 1989-90 = 100.0.

EXPORT PRICE INDEX(a): SITC contribution to all groups index

Category	Jun Qtr 2004(b)	Sep Qtr 2004	Jun Qtr 2004 to Sep Qtr 2004	
ALL GROUPS				
All groups	108.0	115.4	7.4	
SELECTED SITC SECTIONS—CONTRIBUTION TO ALL GROUPS (INDEX POINTS)				
0	Food and live animals	18.18	19.17	0.99
1	Beverages and tobacco	2.45	2.50	0.05
2	Crude materials, inedible, except fuels	18.04	19.03	0.99
3	Mineral fuels, lubricants and other related materials	21.22	24.52	3.30
5	Chemicals and related products n.e.s.	9.46	9.64	0.18
6	Manufactured goods classified chiefly by material	14.87	16.25	1.38
7	Machinery and transport equipment	11.49	11.56	0.07
8	Miscellaneous manufactured articles	3.90	3.94	0.04
SELECTED SITC DIVISIONS—CONTRIBUTION TO ALL GROUPS (INDEX POINTS)				
00	Live animals other than animals of division 03	1.10	1.08	-0.02
01	Meat and meat preparations	5.60	6.24	0.64
02	Dairy products and eggs	2.16	2.18	0.02
03	Fish, crustaceans and molluscs and preparations thereof	1.24	1.36	0.12
04	Cereals and cereal preparations	4.60	4.64	0.04
05	Vegetables and fruit	1.22	1.31	0.09
11	Beverages	2.36	2.41	0.05
21	Hides, skins and furskins, raw	0.70	0.70	—
26	Textile fibres and their wastes	3.32	3.39	0.07
28	Metalliferous ores and metal scrap	11.55	12.40	0.85
32	Coal, coke and briquettes	11.47	13.17	1.70
33	Petroleum, petroleum products and related materials	7.03	8.46	1.43
52	Inorganic chemicals	4.64	4.71	0.07
54	Medicinal and pharmaceutical products	2.56	2.59	0.03
61	Leather, leather manufactures, n.e.s. and dressed furskins	0.42	0.44	0.02
67	Iron and steel	2.18	2.95	0.77
68	Non-ferrous metals	8.98	9.43	0.45
71-75	Power generating machinery and equipment	4.06	4.11	0.05
76-77	Telecommunications and electrical machinery n.e.s.	1.99	1.99	—
78	Road vehicles	3.88	3.91	0.03
79	Other transport equipment	1.55	1.55	—
89	Miscellaneous manufactured articles n.e.s.	2.07	2.10	0.03

— nil or rounded to zero (including null cells)

(a) Reference base of each index: 1989-90 = 100.0.

(b) Differs from previously published June quarter 2004 due to annual reweighting.

EXPORT PRICE INDEX(a): Selected SITC section

<i>Period</i>	<i>Food and live animals chiefly for food (0)</i>	<i>Beverages and tobacco (1)</i>	<i>Crude materials, inedible, except fuels (2)</i>	<i>Mineral fuels, lubricants and other related materials (3)</i>	<i>Chemicals and related products n.e.s. (5)</i>	<i>Manufactured goods classified chiefly by material (6)</i>	<i>Machinery and transport equipment (7)</i>	<i>Miscellaneous manufactured articles (8)</i>
2000-01	109.6	137.8	95.7	162.7	119.9	116.7	104.1	118.4
2001-02	118.9	142.8	99.0	164.7	113.0	105.1	105.6	119.2
2002-03	109.3	143.8	97.0	160.9	100.4	102.1	100.6	104.5
2003-04	100.7	124.4	90.0	139.4	97.2	100.6	89.8	90.8
1999								
December	94.8	130.8	81.2	121.2	97.2	95.7	98.2	111.5
2000								
March	95.9	131.1	81.8	131.9	105.3	106.6	98.6	112.0
June	100.7	134.7	88.3	140.8	114.1	113.0	102.2	116.6
September	101.4	135.0	89.2	148.3	114.8	111.6	100.8	113.1
December	108.3	137.4	94.7	166.7	122.1	119.5	105.1	120.3
2001								
March	111.3	138.8	96.3	161.1	120.9	116.8	104.7	119.2
June	117.5	140.1	102.4	174.8	121.7	118.8	105.8	121.1
September	118.2	142.8	99.9	174.1	118.4	110.0	106.4	121.0
December	121.5	141.4	98.0	166.3	115.1	103.2	107.0	121.3
2002								
March	120.7	145.1	100.6	159.4	111.0	103.4	105.8	119.9
June	115.0	142.0	97.5	158.9	107.3	103.6	103.1	114.7
September	111.3	146.0	96.4	163.7	106.7	103.8	103.7	109.9
December	111.9	145.5	98.5	166.4	101.1	103.7	102.8	107.5
2003								
March	110.7	143.7	99.8	163.9	99.0	103.5	100.0	103.2
June	103.3	140.0	93.2	149.4	94.7	97.2	96.0	97.3
September	100.5	126.0	90.4	142.4	93.9	95.6	94.2	95.3
December	99.2	122.7	86.7	134.7	90.1	95.5	89.4	90.2
2004								
March	100.2	122.5	87.8	127.3	98.6	100.5	86.5	88.0
June	103.0	126.3	95.0	153.3	106.1	110.7	89.0	89.6
September	108.6	128.9	100.2	177.1	108.2	121.0	89.6	90.4

(a) Reference base of each index: 1989-90 = 100.0.

BALANCE OF PAYMENTS GROUPS

<i>Period</i>	<i>Rural goods total</i>	<i>Meat and meat preparations</i>	<i>Cereal grains and cereal preparations</i>	<i>Wool and sheepskins</i>	<i>Other rural</i>
2000-01	98.7	115.4	98.6	66.4	133.2
2001-02	107.7	133.8	105.3	75.6	141.0
2002-03	104.0	118.5	104.8	94.8	125.1
2003-04	95.1	120.4	93.7	78.1	113.5
1999					
December	82.6	95.7	82.7	54.2	112.8
2000					
March	82.8	98.4	81.8	52.4	115.3
June	89.3	107.7	86.4	59.1	121.4
September	91.5	104.8	90.3	61.7	124.8
December	96.9	110.4	97.5	62.6	133.3
2001					
March	100.3	115.9	100.9	67.0	135.7
June	106.2	130.6	105.6	74.1	138.8
September	107.2	129.0	105.1	72.4	143.9
December	108.4	137.9	106.6	66.8	146.0
2002					
March	109.6	136.6	107.9	77.2	142.5
June	105.7	131.7	101.6	85.9	131.4
September	103.5	123.7	100.9	83.6	130.5
December	106.1	120.7	107.5	96.2	127.8
2003					
March	107.1	116.4	111.5	104.3	125.1
June	99.3	113.3	99.3	95.0	117.1
September	96.2	109.8	97.8	84.1	116.3
December	94.4	121.1	92.3	79.0	111.6
2004					
March	94.1	126.2	90.7	74.8	111.1
June	95.8	124.4	94.1	74.4	115.1
September	100.3	138.6	94.9	76.7	118.9

(a) Reference base of each index: 1989-90 = 100.0.

BALANCE OF PAYMENTS GROUPS

<i>Period</i>	<i>Non-rural goods total (excluding non- monetary gold)</i>	<i>Metal ores and minerals</i>	<i>Coal, coke and briquettes</i>	<i>Other minerals</i>	<i>Metals (excluding non- monetary gold)</i>	<i>Machinery</i>	<i>Transport equipment</i>	<i>Other manufactures</i>	<i>Other non- rural</i>	<i>Non- monetary gold</i>
2000-01	126.2	119.5	117.3	267.1	113.9	94.3	126.9	125.0	88.4	101.2
2001-02	123.7	116.4	136.9	238.0	102.2	94.2	131.7	121.4	87.7	112.5
2002-03	117.1	103.3	120.3	258.7	99.4	89.4	126.4	112.5	82.4	117.1
2003-04	107.3	99.9	99.1	234.6	100.2	79.8	112.7	103.7	69.1	111.8
1999										
December	103.4	98.9	100.5	169.8	94.1	90.5	111.4	103.7	84.8	93.2
2000										
March	110.3	103.6	102.4	201.5	105.5	90.8	112.3	106.4	85.3	94.0
June	116.6	109.3	106.0	222.8	110.3	93.2	118.3	119.5	82.0	96.4
September	118.9	112.3	106.9	243.3	109.1	92.3	120.8	120.2	83.8	97.9
December	128.5	121.2	115.6	281.8	116.9	95.3	127.9	126.7	88.4	103.1
2001										
March	126.2	120.0	115.3	265.8	114.0	94.8	127.6	125.3	89.0	100.9
June	131.3	124.4	131.2	277.5	115.7	94.8	131.2	127.6	92.4	102.8
September	128.3	120.3	138.7	262.0	106.7	95.1	132.5	125.5	89.6	108.8
December	124.5	117.5	140.4	236.7	99.7	95.6	133.1	123.8	87.3	110.7
2002										
March	122.2	116.2	138.5	219.8	101.3	94.5	131.8	119.3	89.7	114.5
June	119.8	111.4	129.9	233.5	101.1	91.7	129.2	117.0	84.0	115.9
September	120.5	110.1	128.6	251.0	101.2	92.4	129.4	115.9	81.4	116.8
December	119.8	104.7	126.9	262.8	100.8	91.1	129.6	114.7	83.4	117.3
2003										
March	117.7	102.2	118.2	272.3	100.9	88.6	126.1	111.6	82.9	121.8
June	110.5	96.0	107.5	248.6	94.5	85.4	120.3	107.6	82.0	112.6
September	107.3	95.7	103.1	235.5	93.3	83.5	118.5	105.0	73.0	112.8
December	103.1	92.6	95.2	228.0	93.9	79.7	111.8	101.4	68.0	112.1
2004										
March	103.5	99.2	87.5	220.9	101.2	77.3	107.7	102.4	66.3	109.6
June	115.1	111.9	110.7	254.0	112.4	78.5	112.8	106.0	68.9	112.8
September	124.1	118.0	127.1	295.8	124.5	79.3	113.2	108.7	72.7	115.9

(a) Reference base of each index: 1989-90 = 100.0.

EXPLANATORY NOTES

INTRODUCTION

1 This publication contains indexes measuring changes in the prices of imports of merchandise that are landed in Australia each quarter—the import price index (tables 1–6), and exports of merchandise that are shipped from Australia each quarter—the export price index (tables 7–11).

2 The indexes are calculated on the reference base 1989–90=100.0.

SCOPE

3 The import price index excludes the following items (representing approximately 5% of the value of merchandise imported during the weighting period) because of the inherent difficulties in pricing the items to constant quality (see paragraph 15 below):

- live animals (not for food)
- jewellery and other articles of precious metal n.e.s.
- military equipment
- commodities not classified according to kind
- works of art, collectors' pieces, antiques
- ships of various types.

4 The export price index includes re-exports of merchandise (i.e. goods which are imported into Australia and exported at a later date without physical transformation).

CLASSIFICATIONS

5 Index numbers for selected sections of the Standard International Trade Classification (SITC) are provided in table 3 (import price index) and table 9 (export price index).

6 The import price index is also presented by End Use Class of the United Nations' Classification by Broad Economic Categories (BEC) in tables 4–6. These have been disaggregated into balance of payments groupings.

7 The export price index is also presented by balance of payments export groupings in tables 10 and 11.

ITEMS AND WEIGHTS

8 The import price index and export price index are annually reweighted chained Laspeyres indexes. This method of weighting was introduced in the September quarter 2000 and replaces the 'fixed-base' method of weighting in which the weighting patterns are updated infrequently (generally once every 5 or 10 years).

9 The annual reweighting and chaining process involves a number of steps in order to provide new weights each year. The current weighting basis for the import price index was derived from the average value of import items during 2003–04. This differs slightly from the export price index which has used the average value of export items during 2002–03 and 2003–04, due to the greater volatility associated with the value of export items. These weights were revalued to reflect link period (June quarter 2004) price levels. Indexes derived by using the new weights for the September quarter 2004 were then linked to the already published June quarter 2004 (link period) levels which were derived using the previous series weights. Using this methodology, long-term chain linked series can be constructed over time on a consistent reference base for continuity and user convenience, but using annually refreshed weights. The reference base for each index series continues to be 1989–90=100 even though the weights are being updated each year.

10 The commodities directly represented in each index (the index items) were selected on the basis of the significance of their import and export values in the period 2003–04 for imports and 2002–03 & 2003–04 for exports. All significant commodities were selected for pricing. The weights for minor commodities which are not directly priced are included with those of comparable directly priced items whose prices are likely to move in a similar way.

EXPLANATORY NOTES *continued*

PRICE MEASUREMENT

11 In general, prices of individual shipments are obtained from major importers and exporters of the selected items and relate to the quarter in which the imported goods physically arrive in Australia and the exported goods physically leave Australia.

12 Imports are priced on a 'free on board' (f.o.b), country of origin basis. Therefore freight and insurance charges involved in shipping goods from foreign to Australian ports are excluded from the prices used in the index, as are Australian import duties and taxes. Similarly, exports are priced on a f.o.b basis at the main Australian ports of export. Exports are exempt from taxes on products.

13 As the prices used in the indexes are expressed in Australian currency, changes in the relative value of the Australian dollar and overseas currencies can have a direct impact on price movements for the many commodities that are bought and sold in currencies other than Australian dollars. Prices reported in a foreign currency are converted to Australian dollars using relevant exchange rates. Where imports or exports are transacted in prices expressed in terms of a foreign currency and forward exchange cover is used, the prices in the indexes exclude the forward exchange cover.

14 The main pricing methodology used is specification pricing, under which a manageable sample of precisely specified products is selected, in consultation with each reporting business, for repeat pricing. In specifying the products, care is taken to ensure that they are fully defined in terms of all the characteristics which influence their transaction prices. As such, all the relevant technical characteristics need to be described (e.g. make, model, features) along with the unit of sale, type of packaging, conditions of sale (e.g. delivered, payment within 30 days), etc. The goods are also specified by country and market in order to lessen the impact of price variations attributable solely to changes over time in the mix of countries, or markets.

15 When the quality or specifications of an item being priced change over time, adjustments are made to the reported prices so that the index captures only pure price change. That is, any element of price change attributable to a change in quality is removed. If there is an increase (decrease) in the quality of an item, then the price index is adjusted downwards (upwards) to reflect the 'worth' of the quality change. This technique is known as pricing to constant quality.

16 Wherever possible, prices from volume selling products being traded with predominant countries, or markets, are obtained to ensure specifications have a good chance of being re-priced over time and index series are representative of overall price movements. Individual product weights and weights between markets and countries are regularly reviewed to keep the indexes up to date.

INDEX NUMBERS

17 Index numbers for financial years are simple averages of the relevant quarterly index numbers.

ANALYSIS OF INDEX CHANGES

18 Care should be exercised when interpreting quarter-to-quarter movements in the indexes as short-term movements do not necessarily indicate changes in trend.

19 Movements in indexes from one period to another can be expressed either as changes in 'index points' or as percentage changes. The following example illustrates the method of calculating index points changes and percentage changes between any two periods:

Import price index, All groups index number:

September quarter 2004	115.3 (see table 1)
less September quarter 2003	116.0 (see table 1)
Change in index points	-0.7
Percentage change	$-0.7/116.0 \times 100 = -0.6$

EXPLANATORY NOTES *continued*

ANALYSIS OF INDEX CHANGES *continued*

20 Tables 2 and 8 provide analyses of the contribution which SITC sections and divisions make to the All groups import price index and export price index, respectively. For example, imports of mineral fuels, etc. contributed 9.19 index points to the All groups import price index number of 115.3 for September quarter 2004 and 1.01 index points to the net change of 2.9 index points between June 2004 and September 2004 quarters.

FURTHER INFORMATION

21 Further information on recent price index developments in the ABS is presented in the following publications:

Information Paper: An Analytical Framework for Price Indexes in Australia, cat. no. 6421.0

Information Paper: Producer Price Index Developments, cat. no. 6422.0

Information Paper: Review of the Import Price Index and Export Price Index, Australia, cat. no. 6424.0

Information Paper: Price Indexes and The New Tax System, cat. no. 6425.0

RELATED PUBLICATIONS

22 Users may also wish to refer to the following related publications, which are available from ABS bookshops:

Producer Price Indexes, Australia, cat. no. 6427.0

Consumer Price Index, Australia, cat. no. 6401.0

Wage Cost Index, Australia, cat. no. 6345.0

Australian National Accounts, Input-Output Tables, cat. no. 5209.0

Balance of Payments and International Investment Position, Australia, cat. no. 5302.0

23 Current publications and other products released by the ABS are listed in the *Catalogue of Publications and Products* (cat. no. 1101.0). The Catalogue is available from any ABS office or the ABS web site <<http://www.abs.gov.au>>. The ABS also issues a daily Release Advice on the web site which details products to be released in the week ahead.

ABS DATA AVAILABLE ON REQUEST

24 As well as the statistics included in this and related publications, the ABS has other international trade price index series (many at detailed commodity levels) which are available on request. Inquiries should be made to Steve Whennan on (02) 6252 6251.

APPENDIX INDEX STRUCTURES & WEIGHTING PATTERNS

COMPOSITION

Both the Import Price Index and the Export Price Index have been reweighted in the September quarter 2004. This is in line with the ABS' plan to reweight these indexes annually each September quarter, as explained in paragraphs 8 – 10 of the explanatory notes. The new weighting patterns for both the Import Price Index and Export Price Index, based on the Standard International Trade Classification (SITC) (Revision 3), are presented in this Appendix.

All SITC sections and divisions are included in the reweighted index structure for completeness. However, indexes for some of the lower weighted SITC section and divisions are not constructed separately and so are not available for publication.

Corresponding new weighting patterns based on classification by Broad economic Categories (BEC), Harmonized Tariff Item Statistical Classification (HTSIC) and Australian and New Zealand Standard Industrial Classification (ANZSIC) for the Import Price Index and Australian Harmonised Export Commodity Classification (AHECC) and ANZSIC for the Export Price Index are available on request.

IMPORT PRICE INDEX GROUPED BY SITC(a)(b)

<i>SITC</i>	<i>Divisions to Sections</i>	<i>Divisions & Sections to All Groups</i>
0 Food and live animals	100.00	3.93
01 Meat and meat preparations	5.11	0.20
02 Dairy products and eggs	6.49	0.25
03 Fish, crustaceans and molluscs and preparations thereof	18.82	0.74
04 Cereals and cereal preparations	7.20	0.28
05 Vegetables and fruit	19.24	0.76
06 Sugars, sugar preparations and honey	3.52	0.14
07 Coffee, tea, cocoa and spices	12.93	0.51
08 Feeding stuff for animals	5.26	0.21
09 Miscellaneous edible products	21.43	0.84
1 Beverages and tobacco	100.00	0.74
11 Beverages	80.54	0.60
12 Tobacco	19.46	0.14
2 Crude materials, inedible, except fuels	100.00	1.54
23 Crude rubber	7.24	0.11
24 Cork and wood	37.80	0.58
25 Pulp and waste paper	14.94	0.23
26 Textile fibres and wastes	9.51	0.15
27 Crude fertilisers and minerals	12.83	0.20
28 Metalliferous ores and scrap	17.68	0.27
3 Mineral fuels, lubricants and other related materials	100.00	7.27
33 Petroleum, petroleum products and related materials	98.35	7.15
34 Gas, natural and manufactured	1.65	0.12
4 Animal and vegetable oils, etc.	100.00	0.29
41 Animal oils and fats	6.20	0.02
42 Fixed vegetable fats and oils	82.58	0.24
43 Fats and oils, waxes n.e.s.	11.21	0.03
5 Chemicals and related products n.e.s.	100.00	11.78
51 Organic chemicals	15.31	1.80
52 Inorganic chemicals	5.00	0.59
53 Dyeing, tanning and colouring materials	3.42	0.40
54 Medicinal and pharmaceutical products	39.27	4.63
55 Essential oils and resinoids	8.28	0.98
56 Fertilisers (excluding crude)	4.86	0.57
57 Plastics in primary forms	7.47	0.88
58 Plastics in non-primary forms	6.92	0.82
59 Chemical materials and products n.e.s.	9.47	1.12

(a) Standard International Trade Classification (Revision 3).

(b) Indexes for some lower weighted sections/divisions are not available for publication.

APPENDIX INDEX STRUCTURES & WEIGHTING PATTERNS *continued*

IMPORT PRICE INDEX GROUPED BY SITC(a)(b) *continued*

SITC	Divisions to Sections	Divisions & Sections to All Groups	
6	Manufactured goods classified chiefly by material	100.00	12.16
61	Leather, leather manufactures	0.84	0.10
62	Rubber manufactures n.e.s.	11.04	1.34
63	Cork and wood manufactures	4.22	0.51
64	Paper, paperboard and articles of paper	16.43	2.00
65	Textile yarn, fabrics and related products	15.01	1.83
66	Non-metallic mineral manufactures	13.87	1.69
67	Iron and steel	12.20	1.48
68	Non-ferrous metals	5.72	0.70
69	Manufactures of metals n.e.s.	20.67	2.51
7	Machinery and transport equipment	100.00	47.85
71	Power generating machinery and equipment	4.60	2.20
72	Machinery specialised for particular industries	8.24	3.94
73	Metal working machinery	1.03	0.50
74	General industrial machinery, equipment and parts	11.48	5.49
75	Office machines and ADP machines	13.52	6.47
76	Telecommunications and sound recording equipment	12.90	6.17
77	Electrical machinery, etc and parts thereof	11.84	5.67
78	Road vehicles	29.49	14.11
79	Other transport equipment	6.90	3.30
8	Miscellaneous manufactured articles	100.00	13.91
81	Prefabricated buildings, fixtures and fittings	2.66	0.37
82	Furniture, parts thereof	9.16	1.27
83	Travel goods, handbags	2.63	0.37
84	Articles of apparel and clothing	19.70	2.74
85	Footwear	5.23	0.73
87	Professional, scientific and controlling instruments and apparatus n.e.s.	18.63	2.59
88	Photographic and optical goods	7.03	0.98
89	Miscellaneous manufactured articles n.e.s.	34.96	4.86
9	Commodities and transactions n.e.s.	100.00	0.53
97	Gold, non-monetary	100.00	0.53

(a) Standard International Trade Classification (Revision 3).

(b) Indexes for some lower weighted sections/divisions are not available for publication.

APPENDIX INDEX STRUCTURES & WEIGHTING PATTERNS *continued*

EXPORT PRICE INDEX GROUPED BY SITC(a)(b)

SITC		<i>Division to Sections</i>	<i>Divisions & Sections to All Groups</i>
0	Food and live animals chiefly for food	100.00	16.84
00	Live animals	6.04	1.02
01	Meat and meat preparations	30.79	5.18
02	Dairy products and eggs	11.87	2.00
03	Fish, crustaceans and molluscs and preparations thereof	6.84	1.15
04	Cereals and cereal preparations	25.30	4.26
05	Vegetables and fruit	6.73	1.13
06	Sugar/Honey	5.24	0.88
07	Coffee, tea, cocoa, spices and manufactures thereof	1.37	0.24
08	Animal feed	2.96	0.50
09	Miscellaneous edible products and preparations	2.86	0.48
1	Beverages and tobacco	100.00	2.27
11	Beverages	96.49	2.19
12	Tobacco and tobacco products	3.51	0.08
2	Crude materials, inedible, except fuels	100.00	16.71
21	Hides, skins and furskins, raw	3.86	0.65
22	Oil seeds etc	4.59	0.77
23	Crude Rubber	0.27	0.04
24	Cork and wood	5.41	0.90
25	Pulp and waste paper	0.28	0.05
26	Textiles	18.39	3.07
27	Crude fertilisers and crude minerals (excluding coal petroleum and precious stones)	2.17	0.36
28	Metalliferous ores and meta scrap	64.00	10.70
29	Crude animal materials n.e.s.	1.03	0.17
3	Mineral fuels, lubricants and related materials	100.00	19.66
32	Coal, coke and briquettes	54.06	10.63
33	Petroleum, petroleum products and related materials	33.14	6.51
34	Gas	12.80	2.52
4	Animal and Vegetable Oils, Fats and Waxes	100.00	0.18
41	Animal oils and fats	76.73	0.13
42	Fixed vegetable fats	22.58	0.04
43	Animal oils and fats n.e.s.	0.69	0.01
5	Chemicals and related products n.e.s.	100.00	8.76
51	Organic chemicals	0.09	0.01
52	Inorganic chemicals	49.06	4.30
53	Dyeing, tanning and colouring materials	5.71	0.50
54	Medical and pharmaceutical products	27.06	2.37
55	Essential oils and perfume	4.86	0.43
56	Fertilisers	1.51	0.13
57	Plastics in primary form	2.88	0.25
58	Plastics in non-primary form	2.20	0.19
59	Chemical materials and products n.e.s.	6.63	0.58
6	Manufactured goods classified chiefly by material	100.00	13.77
61	Leather, leather manufactures, n.e.s.	2.85	0.39
62	Rubber manufactures, n.e.s.	0.68	0.09
63	Cork and wood manufactures (excluding furniture)	1.25	0.17
64	Paper, paperboard and articles of paper pulp	5.15	0.71
65	Textile yarn, fabrics, made-up articles, n.e.s.	1.96	0.27
66	Non-metallic mineral manufactures, n.e.s.	8.88	1.22
67	Iron and steel	14.69	2.03
68	Non-ferrous metals	60.41	8.32
69	Manufactures of metals, n.e.s.	4.13	0.57
7	Machinery and transport equipment	100.00	10.64
71-75	Power generating machinery and equipment	35.35	3.76
76-77	Telecommunications and electrical machinery n.e.s.	17.32	1.84
78	Road vehicles	33.82	3.60
79	Other transport equipment	13.51	1.44

(a) Standard International Trade Classification, Revision 3.

(b) Indexes for some lower weighted sections/divisions are not available for publication.

APPENDIX INDEX STRUCTURES & WEIGHTING PATTERNS *continued*

EXPORT PRICE INDEX GROUPED BY SITC(a)(b) *continued*

SITC		<i>Division to Sections</i>	<i>Divisions & Sections to All Groups</i>
8	Miscellaneous manufactured articles	100.00	3.61
81-82	Prefabricated buildings, building fittings and furniture	6.04	0.21
83	Travel goods, handbags and similar containers	0.62	0.02
84	Articles of apparel and clothing	6.53	0.24
85	Footwear	1.56	0.06
87	Professional, scientific and controlling instruments and apparatus n.e.s.	15.54	0.56
88	Photographic apparatus etc., and optical goods n.e.s., watches and clocks	16.55	0.60
89	Miscellaneous manufactured articles n.e.s.	53.16	1.92
9	Commodities and transactions n.e.s.	100.00	7.56
93	Special transactions and commodities n.e.s.	32.28	2.44
96	Coin (other than gold coin), not being legal tender	0.99	0.08
97	Gold, non-monetary (excluding gold ores and concentrates)	66.73	5.04

(a) Standard International Trade Classification, Revision 3.

(b) Indexes for some lower weighted sections/divisions are not available for publication.

FOR MORE INFORMATION . . .

- INTERNET* **www.abs.gov.au** the ABS web site is the best place to start for access to summary data from our latest publications, information about the ABS, advice about upcoming releases, our catalogue, and Australia Now—a statistical profile.
- LIBRARY* A range of ABS publications is available from public and tertiary libraries Australia-wide. Contact your nearest library to determine whether it has the ABS statistics you require, or visit our web site for a list of libraries.
- CPI INFOLINE* For current and historical Consumer Price Index data, call 1902 981 074 (call cost 77c per minute).
- DIAL-A-STATISTIC* For the latest figures for National Accounts, Balance of Payments, Labour Force, Average Weekly Earnings, Estimated Resident Population and the Consumer Price Index call 1900 986 400 (call cost 77c per minute).

INFORMATION SERVICE

Data already published that can be provided within five minutes will be free of charge. Our information consultants can also help you to access the full range of ABS information—ABS user pays services can be tailored to your needs, time frame and budget. Publications may be purchased. Specialists are on hand to help you with analytical or methodological advice.

- PHONE* 1300 135 070
- EMAIL* client.services@abs.gov.au
- FAX* 1300 135 211
- POST* Client Services, ABS, GPO Box 796, Sydney NSW 2001

WHY NOT SUBSCRIBE?

ABS subscription services provide regular, convenient and prompt deliveries of selected ABS publications and products as they are released. Email delivery of monthly and quarterly publications is available.

- PHONE* 1300 366 323
- EMAIL* subscriptions@abs.gov.au
- FAX* (03) 9615 7848
- POST* Subscription Services, ABS, GPO Box 2796Y, Melbourne Vic 3001



2645700009045

ISSN 1445 2588

RRP \$20.00